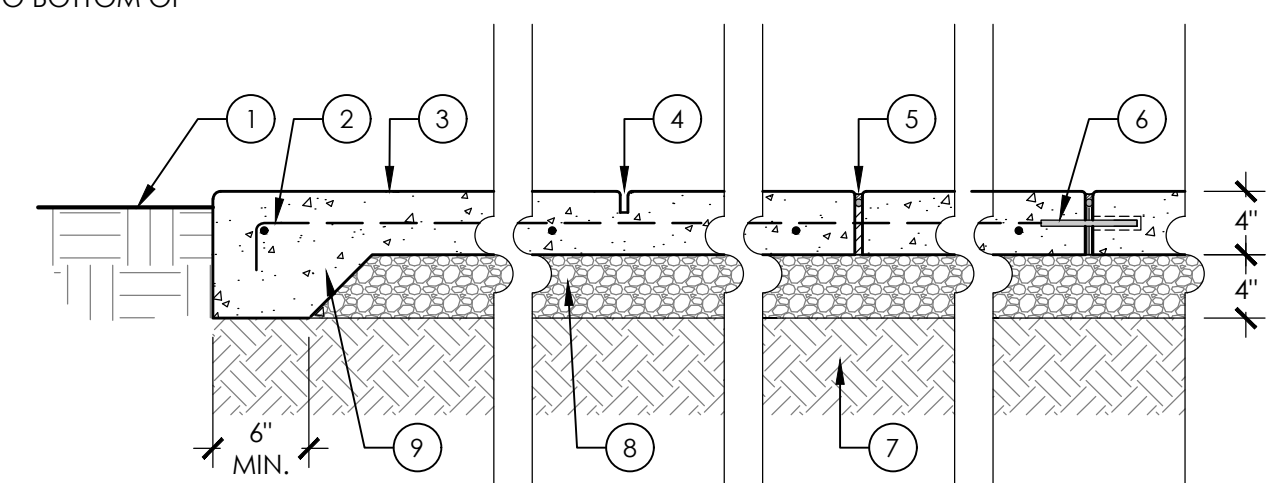
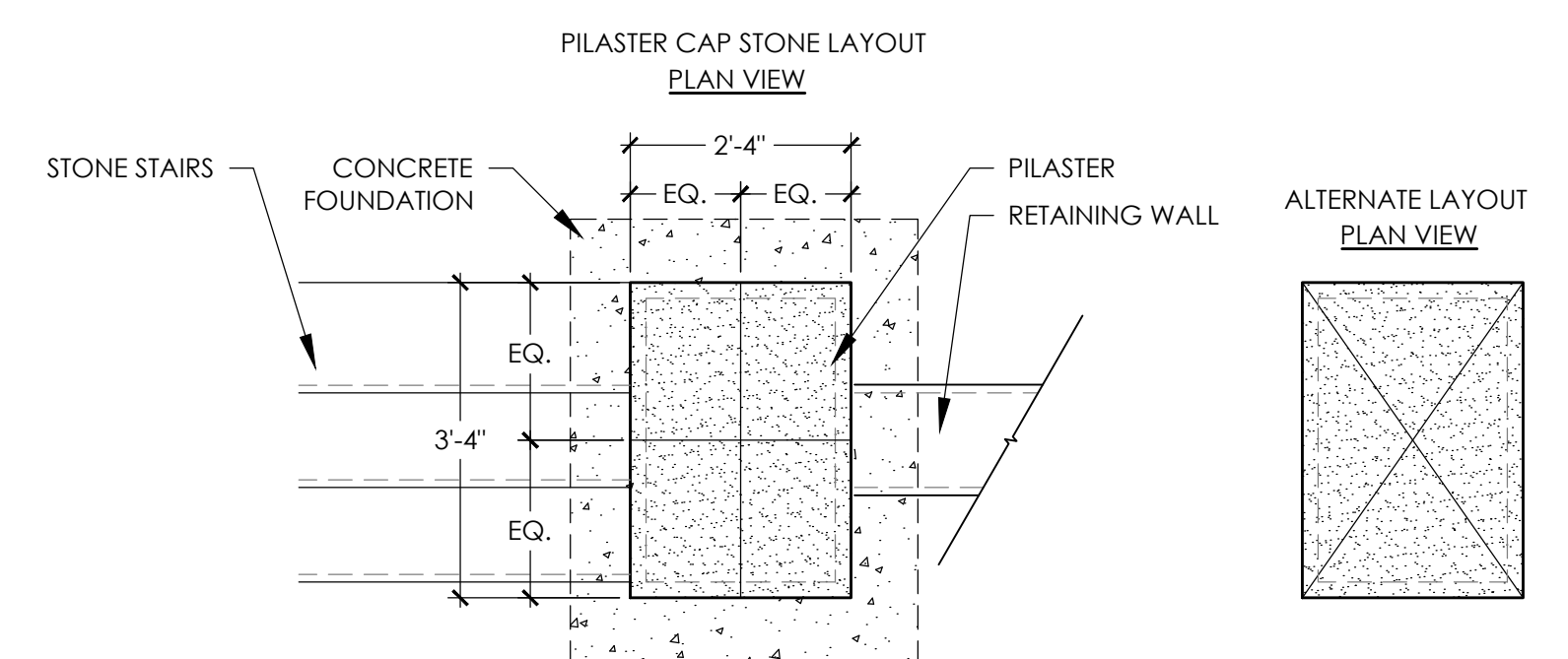


- KEY**
- HOLD GRADE 1" BELOW FINISHED SURFACE AT LANDSCAPE AREAS
 - #3 REBAR @ 18" EACH WAY
 - CONCRETE PAVEMENT, PER PLAN
 - CONTROL JOINT, 1/3 SLAB THICKNESS, 1/4" RADIUS, 1/8" WIDE
 - EXPANSION JOINT W/ 3/8" FELT, FOAM BACKER ROD & POLYURETHANE SEALANT
 - 1/2" x 6" STEEL DOWEL @ 3' O.C. TO ATTACH TO ADJACENT CONCRETE
 - COMPACTED SUBGRADE PER GEOTECHNICAL REPORT
 - 4" MIN. COMPACTED BASE ROCK
 - THICKENED EDGE TO EXTEND TO BOTTOM OF AGGREGATE BASE MATERIAL

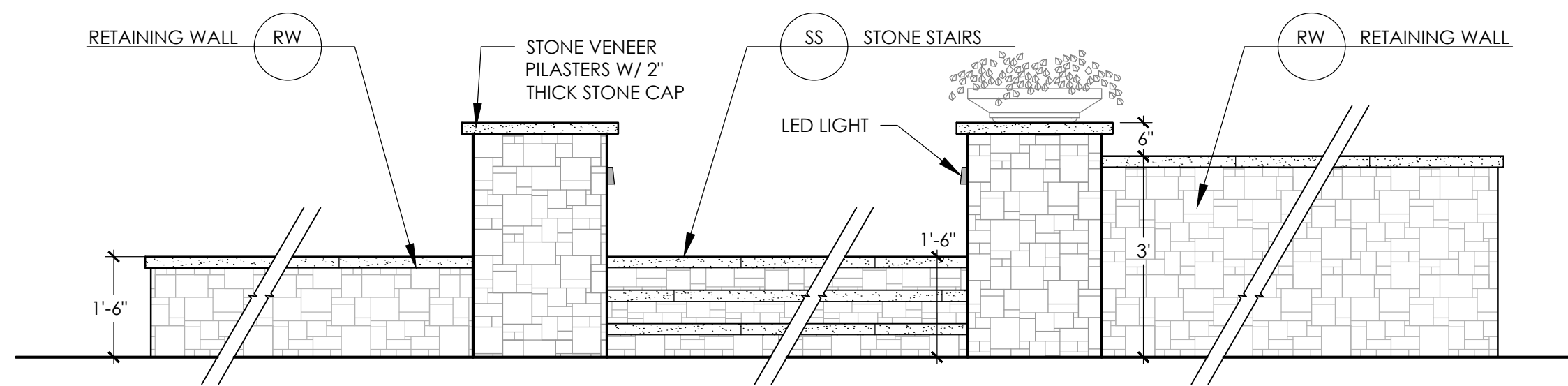
- NOTES**
- ALL EXPOSED EDGES TO HAVE 1/2" RADIUS TOOLED FINISH
 - SLABS LARGER THAN 12' IN ANY DIRECTION SHALL HAVE A THICKENED EDGE AS SHOWN
 - A FELT STRIP OR EXPANSION JOINT MATERIAL SHALL BE INSTALLED BETWEEN ALL EXTERIOR FLATWORK SLABS, BUILDING FOUNDATIONS, WALLS, STRUCTURES, ETC.
 - SLOPE PAVEMENT TO DRAIN A MINIMUM 1/8" PER FOOT, MAXIMUM 2% CROSS SLOPE. SEE GRADING PLAN
 - INSTALL EXPANSION JOINTS @ 40' O.C. MAX., JOINT SEALANT TO MATCH CONCRETE
 - DOWELED JOINTS TO HAVE 3/8" FELT, FOAM BACKER ROD, & POLYURETHANE JOINT SEALANT
 - PREPARE BASE MATERIAL AND SUBGRADE PER GEOTECH'S RECOMMENDATIONS
 - SEE SITE PLAN FOR FINISHES AND COLORS



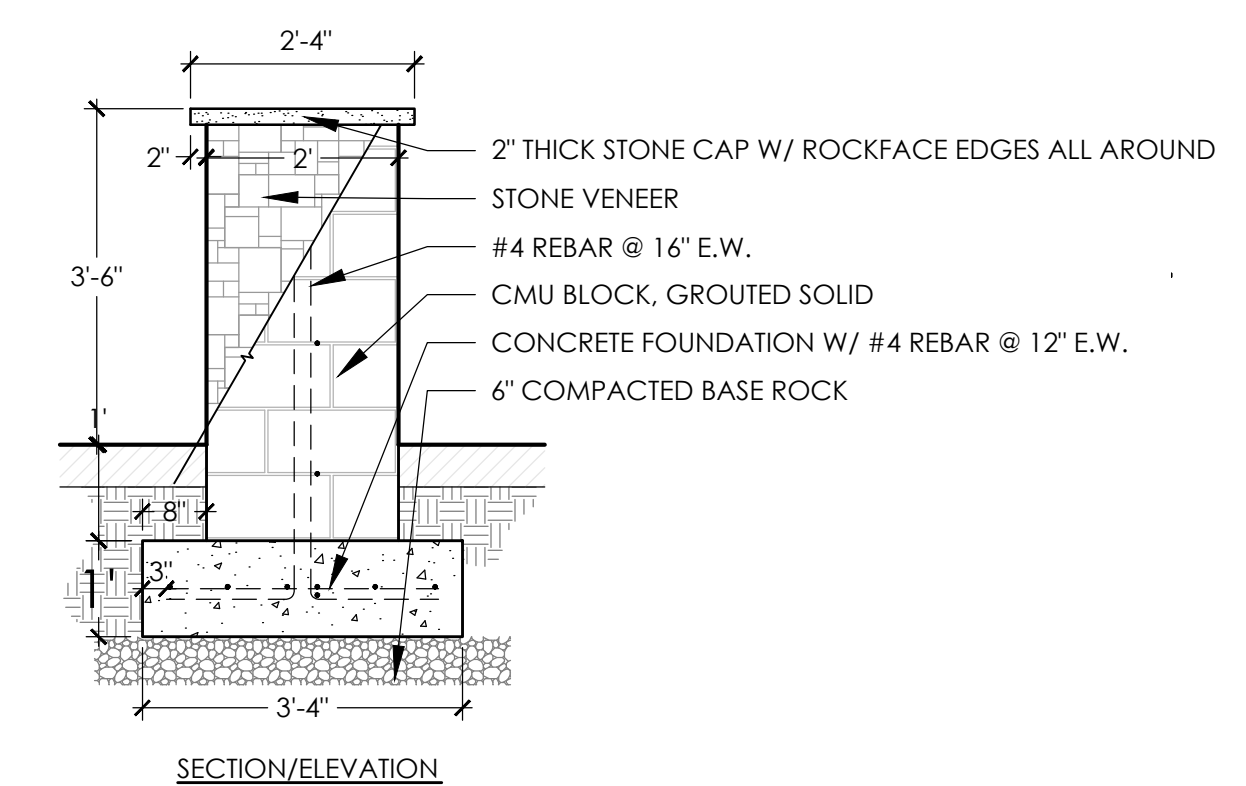
CP CONCRETE PAVEMENT
SCALE: 1/2" = 1'-0"



- NOTES**
- PILASTERS TO BE CONSTRUCTED FROM CMU BLOCK & HAVE NATURAL STONE FINISH, "CHOCTAW LIGHT" FROM SBI MATERIALS
 - JOINTS & MORTAR TO MATCH RESIDENCE
 - CMU BLOCK TO BE NEW AND UNPAINTED, JOINTS SHALL BE STRUCK FLUSH
 - ALL CELLS GROUTED SOLID W/ 2,000 PSI MIN. GROUT

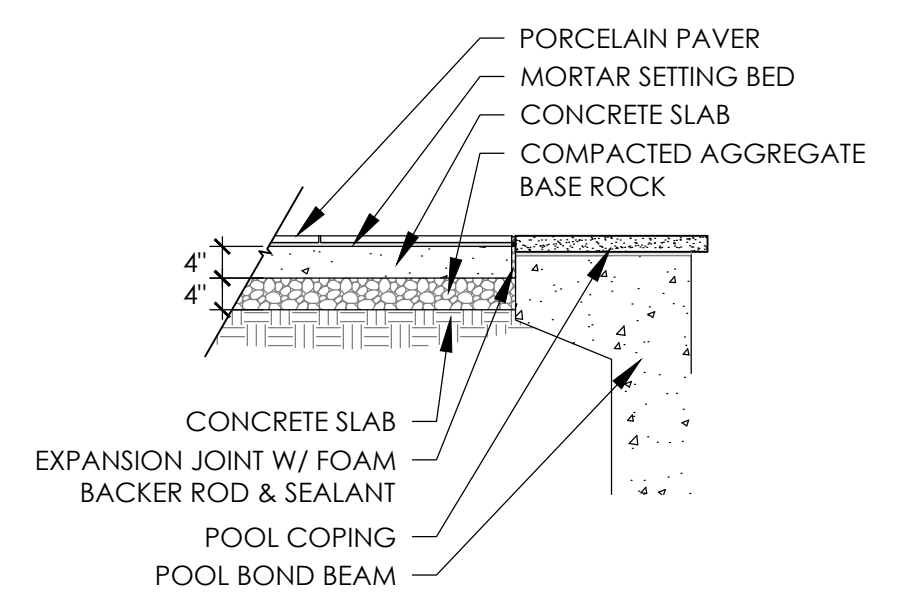


PL PILASTERS & STAIRS
SCALE: 1/2" = 1'-0"

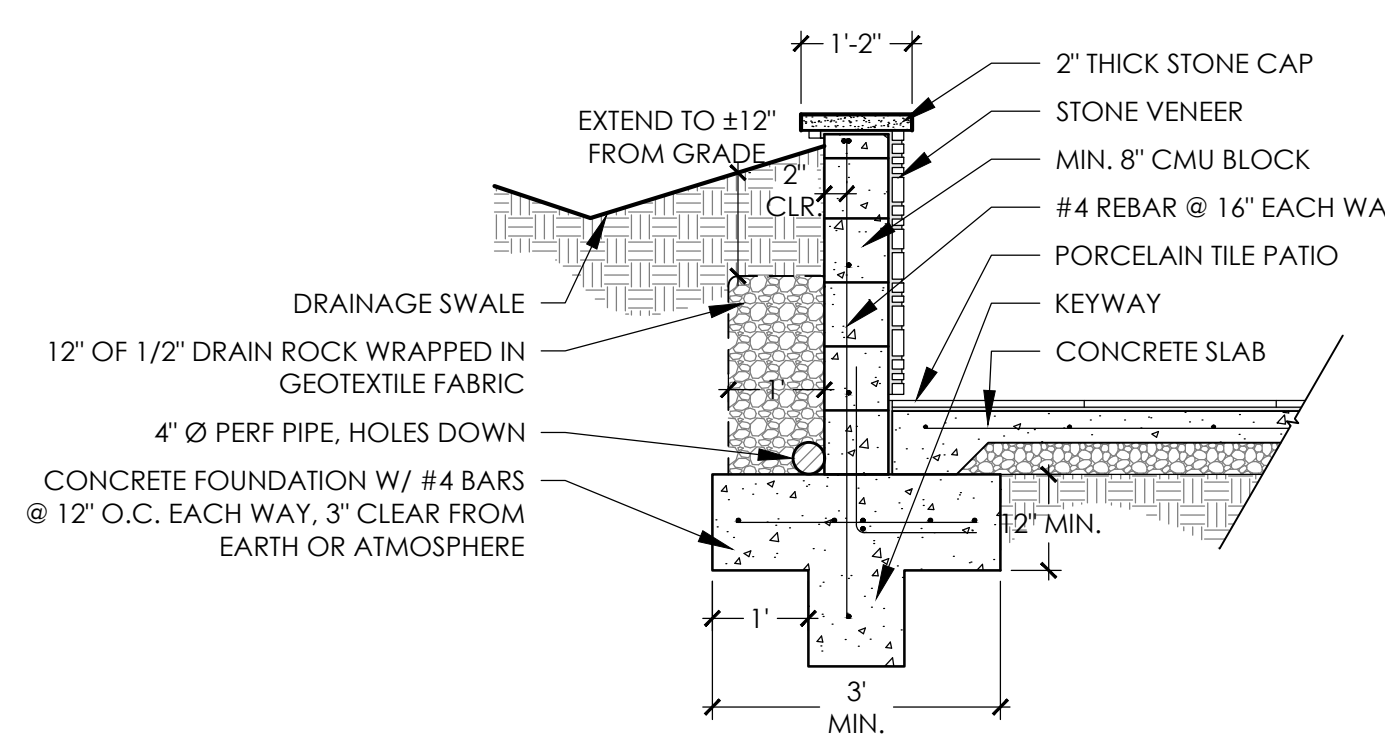


- NOTES**
- CONCRETE SHALL BE 3,000 P.S.I., 4" SLUMP, MEDIUM FINE AGGREGATE
 - TREADS TO BE 2" THICK, ALTERNATE JOINTS IN TREADS
 - SLOPE STEPS 2% TO DRAIN
 - SEE PLAN FOR NUMBER OF STEPS
 - SEE LIGHTING PLAN FOR STAIR LIGHTS. LED STRIP LIGHTS TO BE INSTALLED IN OVERHANGS

- NOTES**
- SEE CONCRETE PAVEMENT DETAIL FOR ADDITIONAL INFO

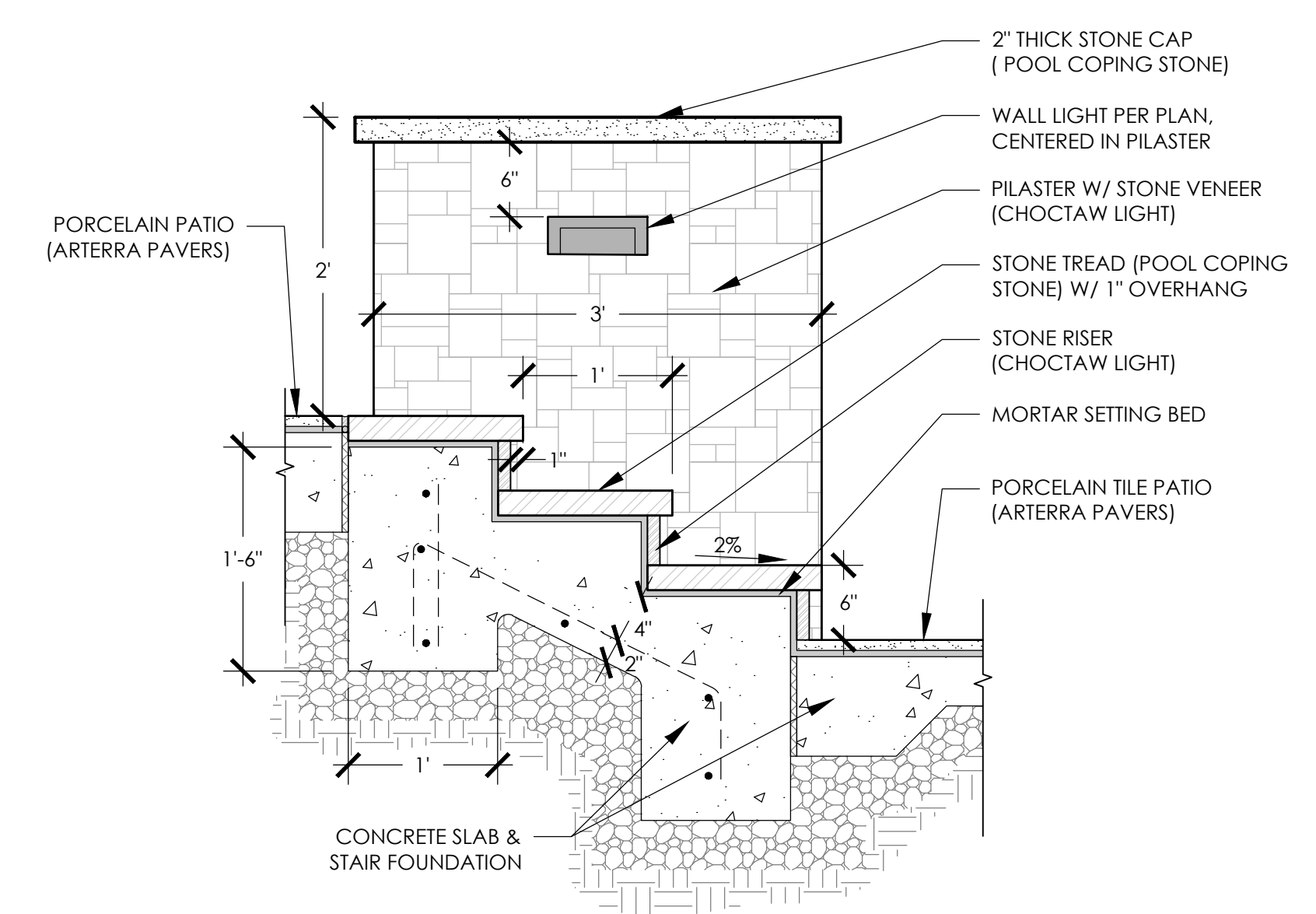


PD POOL DECK & COPING
SCALE: 1/2" = 1'-0"



- NOTES**
- WALL TO HAVE NATURAL STONE FINISH, "CHOCTAW LIGHT" FROM SBI MATERIALS
 - JOINTS & MORTAR TO MATCH RESIDENCE
 - CMU BLOCK TO BE NEW AND UNPAINTED, JOINTS SHALL BE STRUCK FLUSH
 - 12"x12" MIN. KEYWAY WITH VERTICAL REBAR EXTENDING INTO KEYWAY AND MIN. (1) #4 BAR
 - TIE WALL DRAIN PIPE INTO TIGHT PIPE. SEE CIVIL DRAWINGS
 - ALL CELLS GROUTED SOLID W/ 2,000 PSI MIN. GROUT
 - WATERPROOF BACK OF WALL

RW RETAINING WALL W/ STONE VENEER
SCALE: 1/2" = 1'-0"



SS STONE STAIRS AT RETAINING WALL
SCALE: 1" = 1'-0"

ISSUED:

PROJECT INFO
PROJECT NO. 23.10
DATE: 1/19/2024
DESIGNED BY: SK
DRAWN BY: SK

CONTENTS
CONSTRUCTION DETAILS

SHEET NO.

L2.0